

Condensed Score

SUPERSTAR

Lyrics by TIM RICE

Music by ANDREW LLOYD WEBBER
Arranged by Kelly James

Macstoso

C F B \flat F C

Fl., Picc.
Cl.
Tpts., Tbn. 1
A.S.
Tbns. 2, 3

Tuba (T.S., Bar. 8 va)

A Faster $\text{♩} = 120$

C7 E \flat F7 C7

mf (Perc. ad lib. hard rock)

Tbns.

etc.

C7 E \flat F7 C7

C7 E \flat F7 C7

Tbns.

17831-046

© Copyright 1969, 1971 by Leeds Music Limited, 25 Deamark Street, London W.C.2, England
Sole Selling Agent Leeds Music Corporation, 445 Park Avenue, New York, N.Y. 10022 for North, South & Central America
International Copyright Secured Made in U.S.A. All Rights Reserved

[B] C A.N.S F7

Handwritten notes: A.N.S, Eb

C Eb

[C] No PIANO

F7 C F

Fl., Picc.
Cl., Hn., Tpt. 3
Perc.

Bb F C C F Bb F

+Tpt. 2
T.S., Bar.
Tuba

PLAY

C F

Perc. +Tpt. 1 etc.

This system shows the first two measures of a musical phrase. The top staff is for Percussion, featuring a rhythmic pattern of eighth and sixteenth notes. The bottom staff is for Tpt. 1, with a melodic line. Chords C and F are indicated above the staves.

Bb F C C F

Tpts. Tuba T.S., Bar. Tuba

This system continues the musical phrase. The top staff is for Tpts. and the bottom staff is for Tuba. Chords Bb, F, C, C, and F are indicated above the staves.

Bb F C C Eb F F# G

Perc.

This system continues the musical phrase. The top staff is for Percussion, featuring a complex rhythmic pattern. The bottom staff is for Tuba. Chords Bb, F, C, C, Eb, F, F#, and G are indicated above the staves.

C Eb F F# G C Eb F F# G

1. Tpt. 1

This system shows the first ending of a musical phrase. The top staff is for Tpt. 1, with a melodic line. Chords C, Eb, F, F#, G, C, Eb, F, F#, and G are indicated above the staves.

2. C F Db Eb G7b9 C

2. Tpts. Tuba

This system shows the second ending of a musical phrase. The top staff is for Tpts. and the bottom staff is for Tuba. Chords C, F, Db, Eb, G7b9, and C are indicated above the staves.

MAESTOSO

Handwritten musical notation on a single staff in 4/4 time. It begins with a double bar line and repeat dots. The first four measures contain chords: C, F, Bb/F, and C. The piece ends with a double bar line and repeat dots, followed by a scribble.

f
FASTER

Handwritten musical notation on a single staff in 4/4 time, marked 'FASTER'. It begins with a double bar line and repeat dots. The first six measures contain chords: C7, Eb, F7, C7, C, and Eb.

mf

Handwritten musical notation on a single staff in 4/4 time. It contains six measures of chords: F7, C7, C7, Eb, F7, and C7/F.

Handwritten musical notation on a single staff in 4/4 time, marked with a boxed 'B'. It contains seven measures of chords: C, Eb, F7, C, C, Eb, and F7.

Handwritten musical notation on a single staff in 4/4 time, marked with a boxed 'C'. It contains seven measures of chords: C, C, F, Bb/F, C, C, and F.

Handwritten musical notation on a single staff in 4/4 time, marked with a boxed 'D'. It contains seven measures of chords: Bb/F, C, C, F, Bb/F, C, and C.

Handwritten musical notation on a single staff in 4/4 time. It contains seven measures: F, Bb/F, C, and a melodic line (C, Eb, F, F#, G) with a slur. The last two measures are marked with a slash and a vertical line.

Handwritten musical notation on a single staff in 4/4 time. It contains seven measures: C, F, and a triplet of chords (Bb, Eb, G7) with an 'x' above each. The final measure is a C chord with an 'n' above it. A dynamic marking 'p' is below the triplet, and 'f' is below the final C chord. A large bracket spans the last three measures.

Four empty musical staves for practice or additional notation.

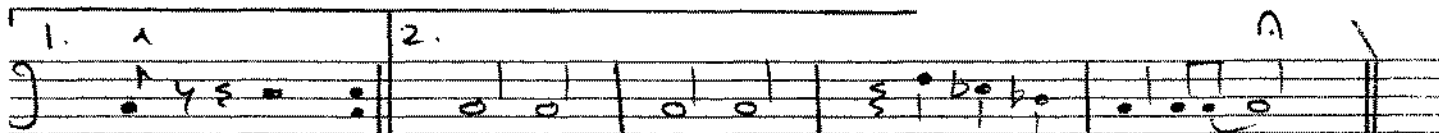
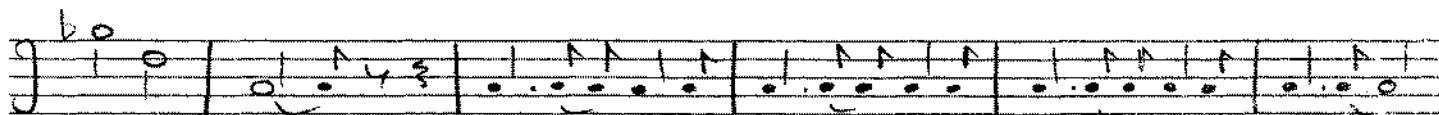
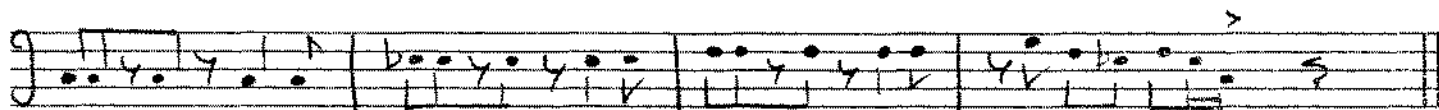
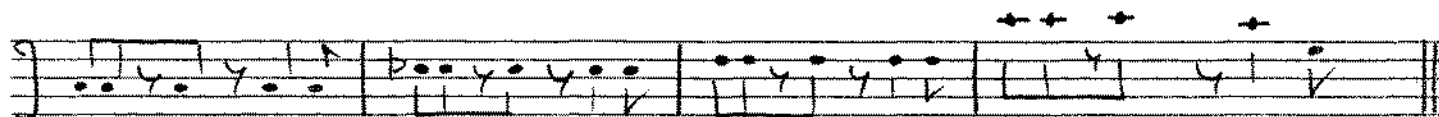
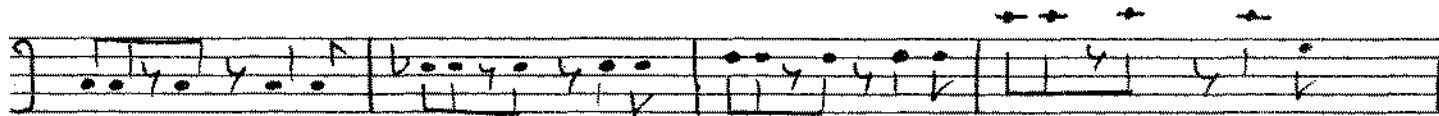


f

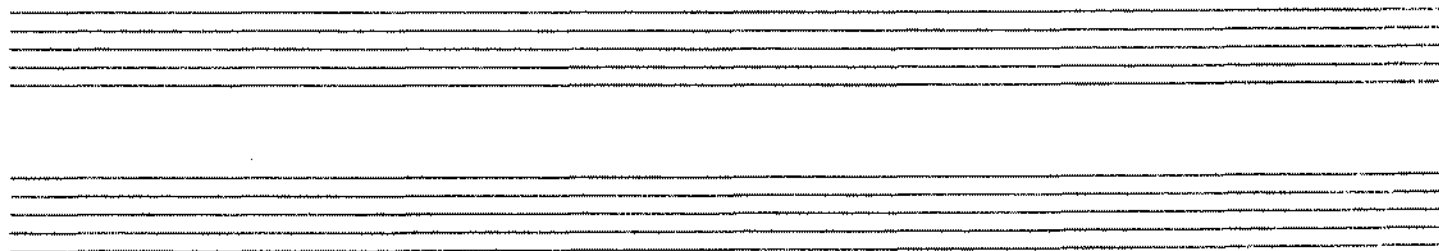
FASTER



mf



p ∇ f



DRUMS
MAESTOSO

SUPERSTAR

42

First system of drum notation, 4/4 time signature. It features a complex rhythmic pattern with various note values and rests. The notation includes stems with flags and beams, indicating sixteenth and thirty-second notes. There are also rests and dynamic markings like 'f'.

A FASTER

Second system of drum notation, 4/4 time signature. It features a complex rhythmic pattern with various note values and rests. The notation includes stems with flags and beams, indicating sixteenth and thirty-second notes. There are also rests and dynamic markings like 'mf'. Measure numbers 4, 8, and 11 are indicated above the staff.

mf HARD ROCK AD LIB

B

Third system of drum notation, 4/4 time signature. It features a complex rhythmic pattern with various note values and rests. The notation includes stems with flags and beams, indicating sixteenth and thirty-second notes. There are also rests and dynamic markings like 'mf'. Measure numbers 4 and 7 are indicated above the staff.

C

Fourth system of drum notation, 4/4 time signature. It features a complex rhythmic pattern with various note values and rests. The notation includes stems with flags and beams, indicating sixteenth and thirty-second notes. There are also rests and dynamic markings like 'pp'. Measure numbers 4 and 7 are indicated above the staff.

D

Fifth system of drum notation, 4/4 time signature. It features a complex rhythmic pattern with various note values and rests. The notation includes stems with flags and beams, indicating sixteenth and thirty-second notes. There are also rests and dynamic markings like 'f'. Measure numbers 4 and 6 are indicated above the staff.

Sixth system of drum notation, 4/4 time signature. It features a complex rhythmic pattern with various note values and rests. The notation includes stems with flags and beams, indicating sixteenth and thirty-second notes. There are also rests and dynamic markings like 'f'. Measure numbers 4 and 6 are indicated above the staff.

2.

Seventh system of drum notation, 4/4 time signature. It features a complex rhythmic pattern with various note values and rests. The notation includes stems with flags and beams, indicating sixteenth and thirty-second notes. There are also rests and dynamic markings like 'p' and 'f'. Measure numbers 4 and 6 are indicated above the staff.

Eighth system of empty drum notation, 4/4 time signature.

Ninth system of empty drum notation, 4/4 time signature.

Tenth system of empty drum notation, 4/4 time signature.

Eleventh system of empty drum notation, 4/4 time signature.

Twelfth system of empty drum notation, 4/4 time signature.

1ST ALTO SAX

SUPER STAR

42

MAESTOSO

f

A FASTER

B

C

D

f

1. 2.

P < ff

2ND ALTO SAX

SUPERSTAR

MAESTOSO

mf

A FASTER

mf

B

C

D

f

1. > 2. p \curvearrowright ff

1ST TENOR SAX

SUPERSTAR

42

MAESTOSO

f

A FASTER

B

C 4

D

mf

f

1. 2.

p

f

2ND TENOR SAX

SUPERSTAR

MAESTOSO

f

A

FASTER

mf

B

C

4

D

mf

f

1.

2.

p

EB BARITONE SAX

SUPERSTAR

42

Maestoso

f *mf*

A FASTER

B

mf

C 4

D

p *ff*

1ST TROMBONE

SURESTA

MAESTROSO

Handwritten musical notation for the first staff, featuring a treble clef and a 4/4 time signature. The music consists of a series of eighth and sixteenth notes with various accidentals (sharps, flats, naturals). A fermata is placed over the final measure of the staff.

f FASTER

Handwritten musical notation for the second staff, starting with a box labeled 'A'. It continues with eighth and sixteenth notes and includes a triplet of eighth notes. A dynamic marking of *mf* is present at the beginning.

Handwritten musical notation for the third staff, continuing the melodic line with eighth and sixteenth notes and various accidentals.

Handwritten musical notation for the fourth staff, featuring a series of eighth and sixteenth notes with accidentals.

Handwritten musical notation for the fifth staff, starting with a box labeled 'B'. It contains eighth and sixteenth notes with various accidentals.

Handwritten musical notation for the sixth staff, continuing the melodic line with eighth and sixteenth notes and accidentals.

Handwritten musical notation for the seventh staff, starting with a box labeled 'C' and a measure rest of 8. It includes a box labeled 'D' and a dynamic marking of *mf*. The staff concludes with a dynamic marking of *f*.

Handwritten musical notation for the eighth staff, featuring eighth and sixteenth notes with various accidentals and a first ending bracket.

Handwritten musical notation for the ninth staff, including a triplet of eighth notes, a dynamic marking of *p*, and a first ending bracket.

Handwritten musical notation for the tenth staff, consisting of a series of eighth notes.

Handwritten musical notation for the eleventh staff, consisting of a series of eighth notes.

Handwritten musical notation for the twelfth staff, consisting of a series of eighth notes.

2ND TROMBONE

SUPERSTAR

MAESTRO

Musical staff with notes and rests. The staff contains a sequence of notes with stems and beams, including some triplets. There are also rests and dynamic markings.

A *f* *FASTER*

Musical staff with notes and rests. This section is marked 'FASTER' and 'f'. It features a series of notes with stems and beams, including some triplets. There are also rests and dynamic markings.

Musical staff with notes and rests. This section contains a series of notes with stems and beams, including some triplets. There are also rests and dynamic markings.

Musical staff with notes and rests. This section contains a series of notes with stems and beams, including some triplets. There are also rests and dynamic markings.

B

Musical staff with notes and rests. This section is marked 'B' and contains a series of notes with stems and beams, including some triplets. There are also rests and dynamic markings.

Musical staff with notes and rests. This section contains a series of notes with stems and beams, including some triplets. There are also rests and dynamic markings.

Musical staff with notes and rests. This section contains a series of notes with stems and beams, including some triplets. There are also rests and dynamic markings.

Musical staff with notes and rests. This section contains a series of notes with stems and beams, including some triplets. There are also rests and dynamic markings.

Musical staff with notes and rests. This section contains a series of notes with stems and beams, including some triplets. There are also rests and dynamic markings.

Empty musical staff.

Empty musical staff.

Empty musical staff.

3rd TROMBONE

SUPERSTAR

MAESTOSO

Musical staff with notes and rests, starting with a treble clef and a 4/4 time signature. The staff contains several measures of music with various note values and rests.

A *f* FASTER

Musical staff with notes and rests, marked with a box 'A', a dynamic marking 'f', and the word 'FASTER'. The staff contains several measures of music with various note values and rests.

mf

Musical staff with notes and rests, marked with a dynamic marking 'mf'. The staff contains several measures of music with various note values and rests.

Musical staff with notes and rests, containing several measures of music with various note values and rests.

B

Musical staff with notes and rests, marked with a box 'B'. The staff contains several measures of music with various note values and rests.

Musical staff with notes and rests, containing several measures of music with various note values and rests.

C 8 **D** 4

Musical staff with notes and rests, marked with boxes 'C' and 'D' and numbers '8' and '4'. The staff contains several measures of music with various note values and rests.

mf

Musical staff with notes and rests, marked with a dynamic marking 'mf'. The staff contains several measures of music with various note values and rests.

f

Musical staff with notes and rests, marked with a dynamic marking 'f'. The staff contains several measures of music with various note values and rests.

1. 2.

Musical staff with notes and rests, marked with first and second endings. The staff contains several measures of music with various note values and rests.

4th Trombone
MAESTOSO

SUPERSTAR

Handwritten musical score for 4th Trombone, Maestoso, Superstar. The score consists of 11 staves. The first staff is the melody, starting with a treble clef and a 4/4 time signature. It includes dynamic markings like 'f' and 'mf', and performance instructions like 'FASTER'. The second staff is a rhythmic accompaniment with a bass clef and a 4/4 time signature, featuring a steady eighth-note pattern. The third staff is a bass line with a bass clef and a 4/4 time signature, containing a few notes and rests. The fourth staff is a second rhythmic accompaniment, similar to the second staff. The fifth staff is a second bass line, similar to the third staff. The sixth staff is a second melody line, similar to the first staff. The seventh staff is a second rhythmic accompaniment, similar to the second staff. The eighth staff is a second bass line, similar to the third staff. The ninth staff is a second rhythmic accompaniment, similar to the second staff. The tenth staff is a second bass line, similar to the third staff. The eleventh staff is a second melody line, similar to the first staff. The score includes various musical notations such as notes, rests, accidentals, and dynamic markings.

1ST TRUMPET

MAESTRO
SUPERSTAR

FASTER
42

Handwritten musical notation for the first staff, featuring a treble clef, a key signature of one sharp (F#), and a 4/4 time signature. The music begins with a dynamic marking of *f*. It includes various note values, rests, and articulation marks. A boxed letter 'B' is present in the second measure, and a boxed letter 'A' is at the end of the staff.

Handwritten musical notation for the second staff, starting with a dynamic marking of *mf*. It continues the melodic line with similar note values and articulation as the first staff.

Handwritten musical notation for the third staff, continuing the piece with consistent notation and dynamics.

Handwritten musical notation for the fourth staff, featuring a dynamic marking of *mf* and including a boxed letter 'B' in the second measure.

Handwritten musical notation for the fifth staff, continuing the melodic development.

Handwritten musical notation for the sixth staff, including a dynamic marking of *f* at the beginning.

Handwritten musical notation for the seventh staff, featuring a dynamic marking of *p* and a fermata over the final notes.

Eight empty musical staves, each consisting of five horizontal lines, provided for additional notation or practice.

2ND TRUMPET
MAESTOSO

SUPERSTAR

42

Handwritten musical score for 2nd Trumpet, featuring measures 1-8. The score is written on a single staff with a treble clef and a key signature of one sharp (F#). The time signature is 4/4. The piece is titled "SUPERSTAR" and is marked "MAESTOSO". The tempo is indicated as "FASTER" at the end of the first measure. The score includes several dynamic markings: *f* (forte) at the beginning, *mf* (mezzo-forte) in measures 2, 4, and 7, and *p* (piano) and *ff* (fortissimo) at the end of measure 8. There are also markings for *f* and *ff* at the end of the piece. The score is divided into sections labeled A, B, C, and D. Section A is the first measure, B is measures 2-3, C is measure 4, and D is measures 5-8. There is a large 'X' over the notes in measure 6. The score ends with a double bar line and a fermata. Below the staff, there are three empty staves.

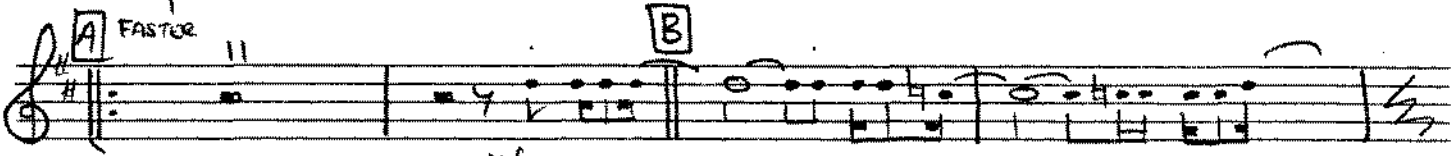
3rd TRUMPET

SUPERSTAR

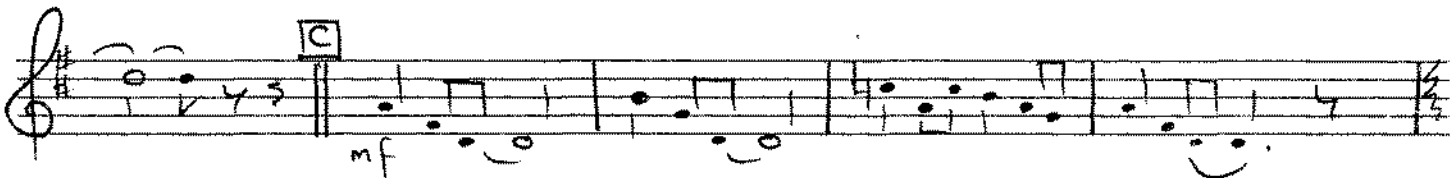
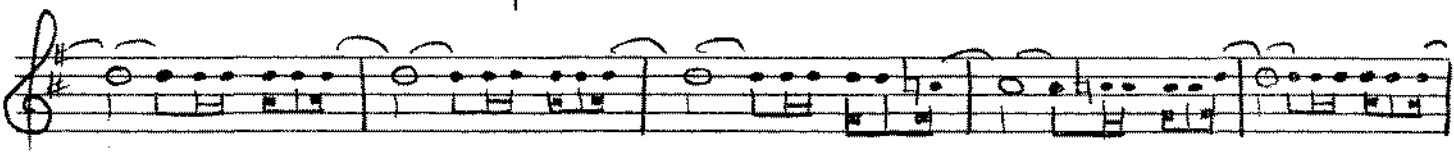
MAESTOSO



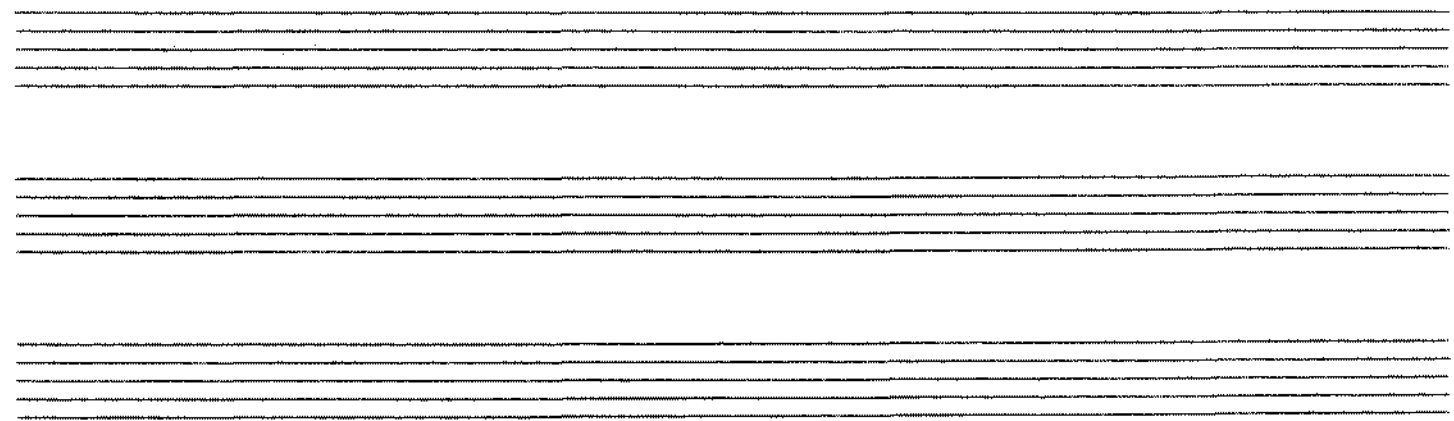
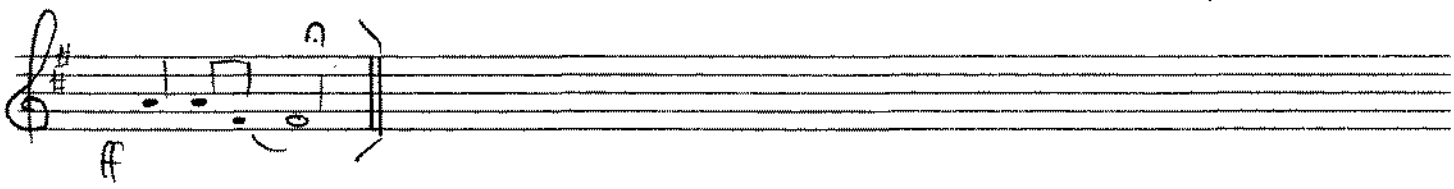
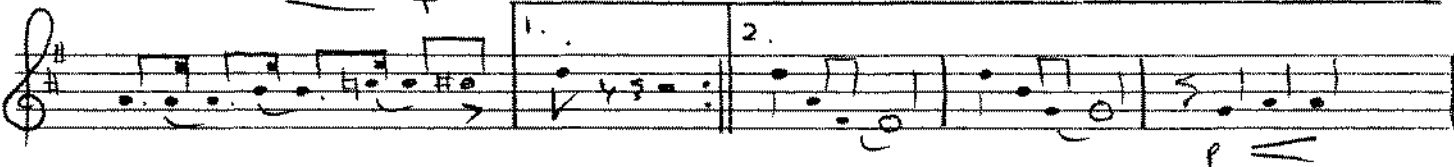
f



mf



mf



4+4 TRUMPET

SUPERSTAR

MAESTOSO

Handwritten musical notation for the first staff, featuring a treble clef, a key signature of one sharp (F#), and a 4/4 time signature. The music begins with a dynamic marking of *f* (forte). The notation includes quarter notes, eighth notes, and a triplet of eighth notes.

A FASTER

Handwritten musical notation for the second staff, starting with a boxed section marker 'A'. The tempo marking 'FASTER' is present. The dynamic marking changes to *mf* (mezzo-forte). The notation includes quarter notes, eighth notes, and a triplet of eighth notes.

Handwritten musical notation for the third staff, continuing the melodic line with quarter notes and eighth notes.

Handwritten musical notation for the fourth staff, featuring a boxed section marker 'C'. The dynamic marking is *mf*. The notation includes quarter notes, eighth notes, and a triplet of eighth notes.

Handwritten musical notation for the fifth staff, continuing the melodic line with quarter notes and eighth notes.

Handwritten musical notation for the sixth staff, starting with a boxed section marker 'D'. The notation includes quarter notes and eighth notes.

Handwritten musical notation for the seventh staff, featuring a dynamic marking of *f*. The notation includes quarter notes, eighth notes, and a triplet of eighth notes.

Handwritten musical notation for the eighth staff, including first and second endings. The notation includes quarter notes, eighth notes, and a triplet of eighth notes.

Handwritten musical notation for the ninth staff, featuring dynamic markings of *p* (piano) and *ff* (fortissimo). The notation includes quarter notes, eighth notes, and a triplet of eighth notes.

Four empty musical staves provided for practice or additional notation.